

# Tainted Organizer

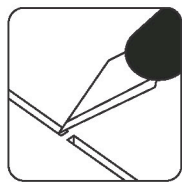
LTTG

Compatible with Tainted Grail

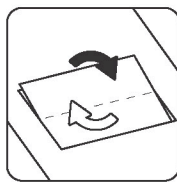
This product is not licensed and is up for change at any time in the future.



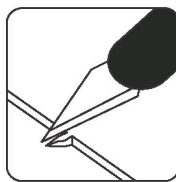
## Assembly Guide



Use an exacto knife to cut the bits connecting the parts to the frame.

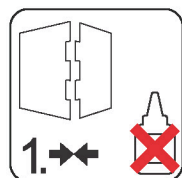


Remove the parts from the frame with a rotating motion along the axis formed by the bits you just cut.



Use the exacto knife to remove any of the remaining connection bits.

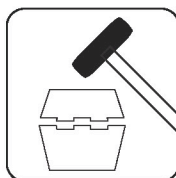
Use **wood glue** for assembly. Always dry fit the parts first to make sure the components are correct ones. If you encounter any issues, please contact us at [info@laserox.net](mailto:info@laserox.net) or our Facebook page at [facebook.com/laseroxinserts](https://www.facebook.com/laseroxinserts).



Always dry-fit the parts to together without any glue to make sure you are assembling the correct parts.



Use a drop of glue along the joints and hold it in place until the glue has sufficiently dried.

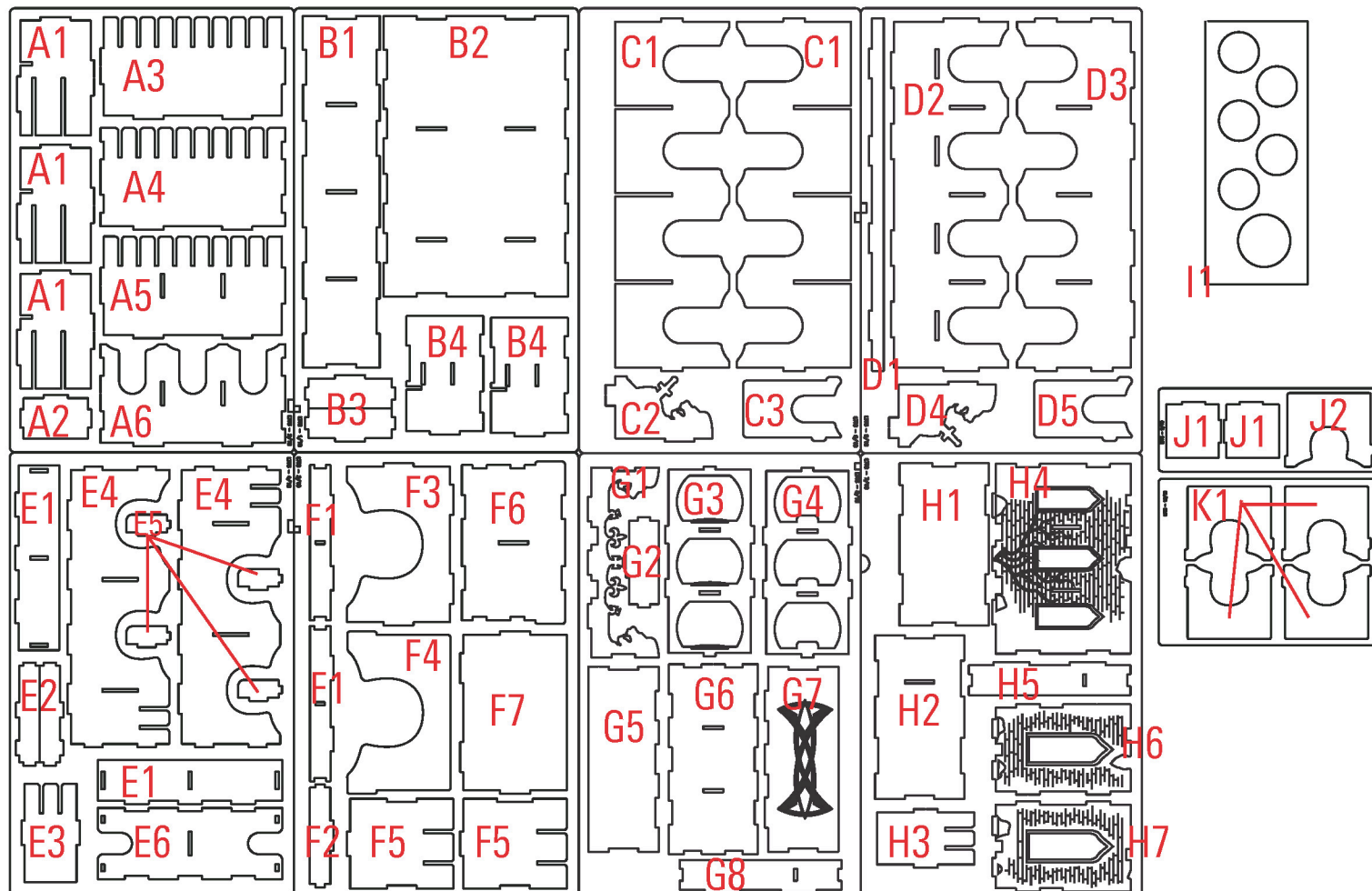


Press the parts together or use a hobby hammer with slight force for assembly.

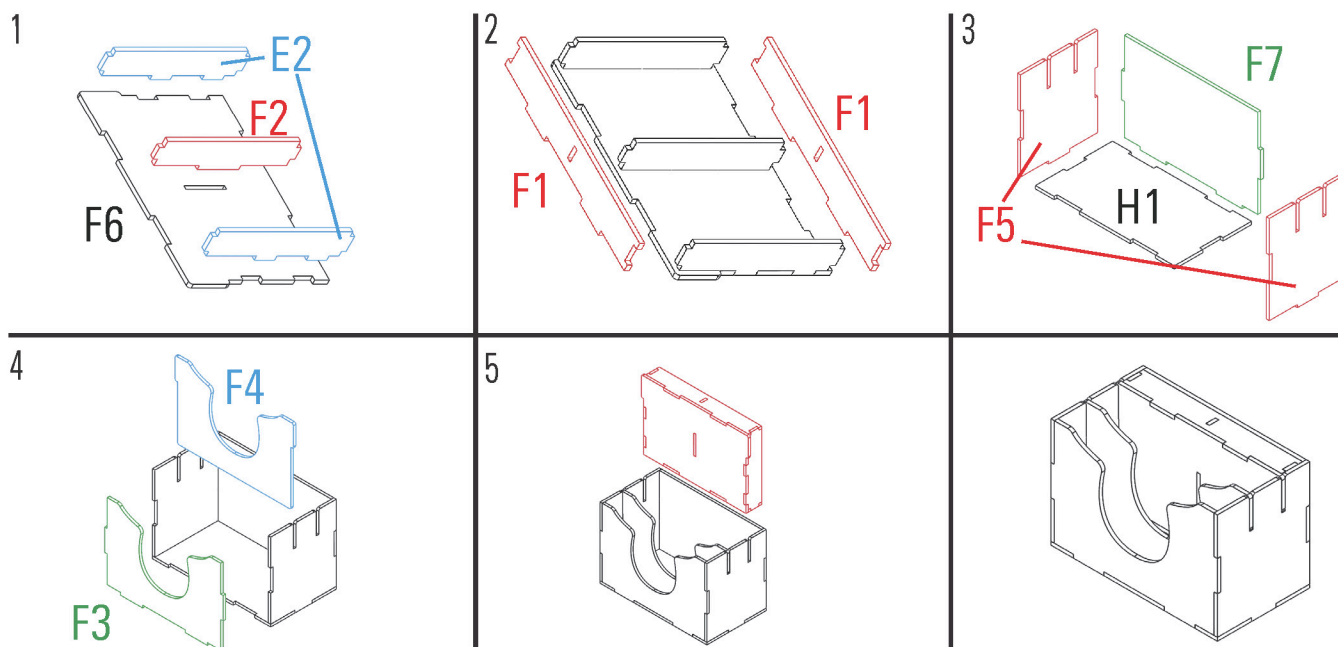


**WARNING** Choking hazard!  
Not for children under 3 years.

## Part numbers

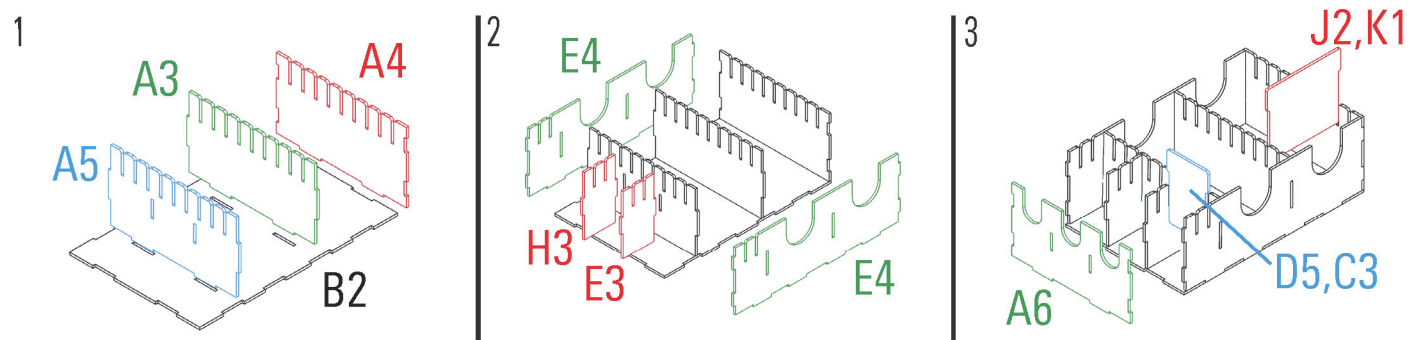


## Card tray 1



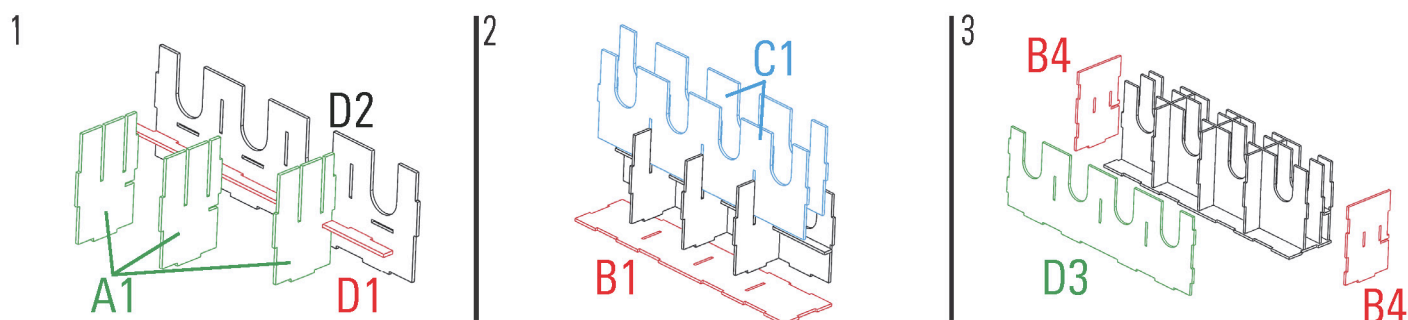
Required parts: **E2x2,F1x2,F2,F3,F4,F5x2,F6,F7,H1**

## Card tray 2



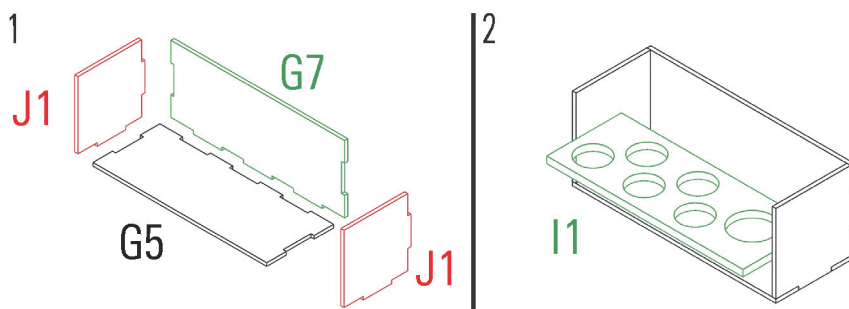
Required parts: **A3,A4,A5,A6,B2,C3,D5,E4x2,H3x2,J2,K1x4**

## Encounter cards



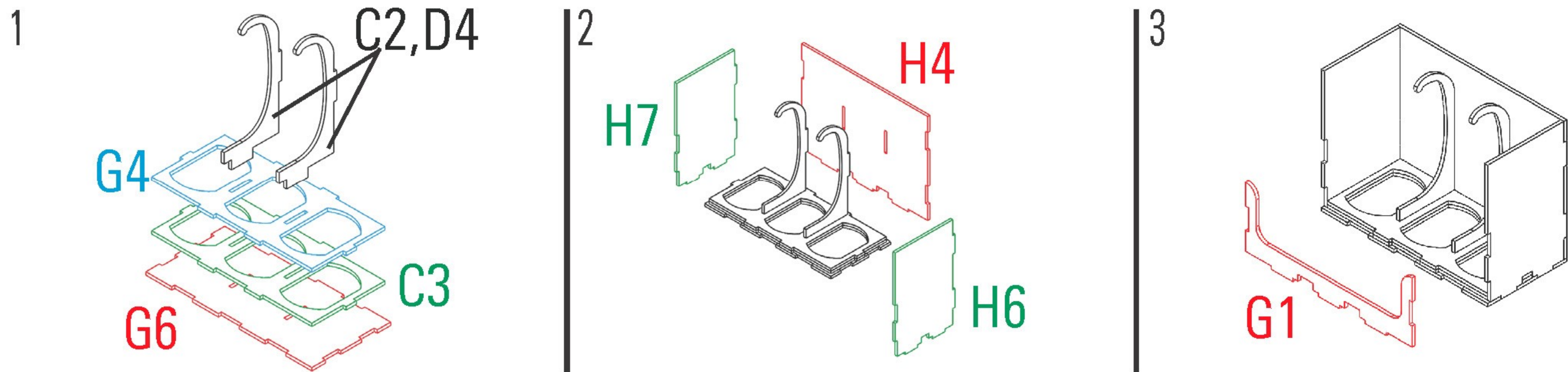
Required parts: **A1x3,B1,B4x2,C1,D1,D2,D3**

## Figure tray



Required parts: **G5,G7,J1x2,I1**

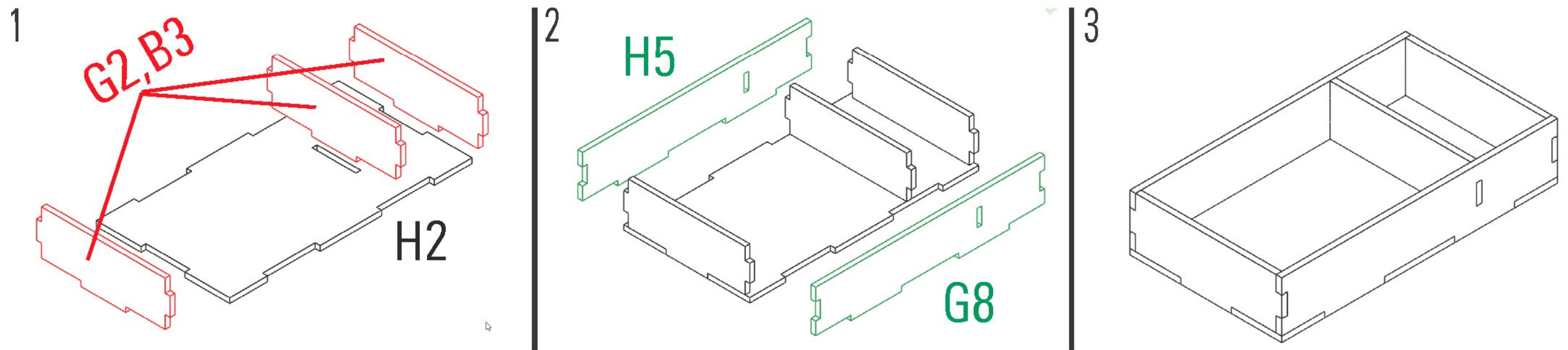
## Menhir tray



For graphic inside: switch H6 with H7  
and make sure H4 facing inward.

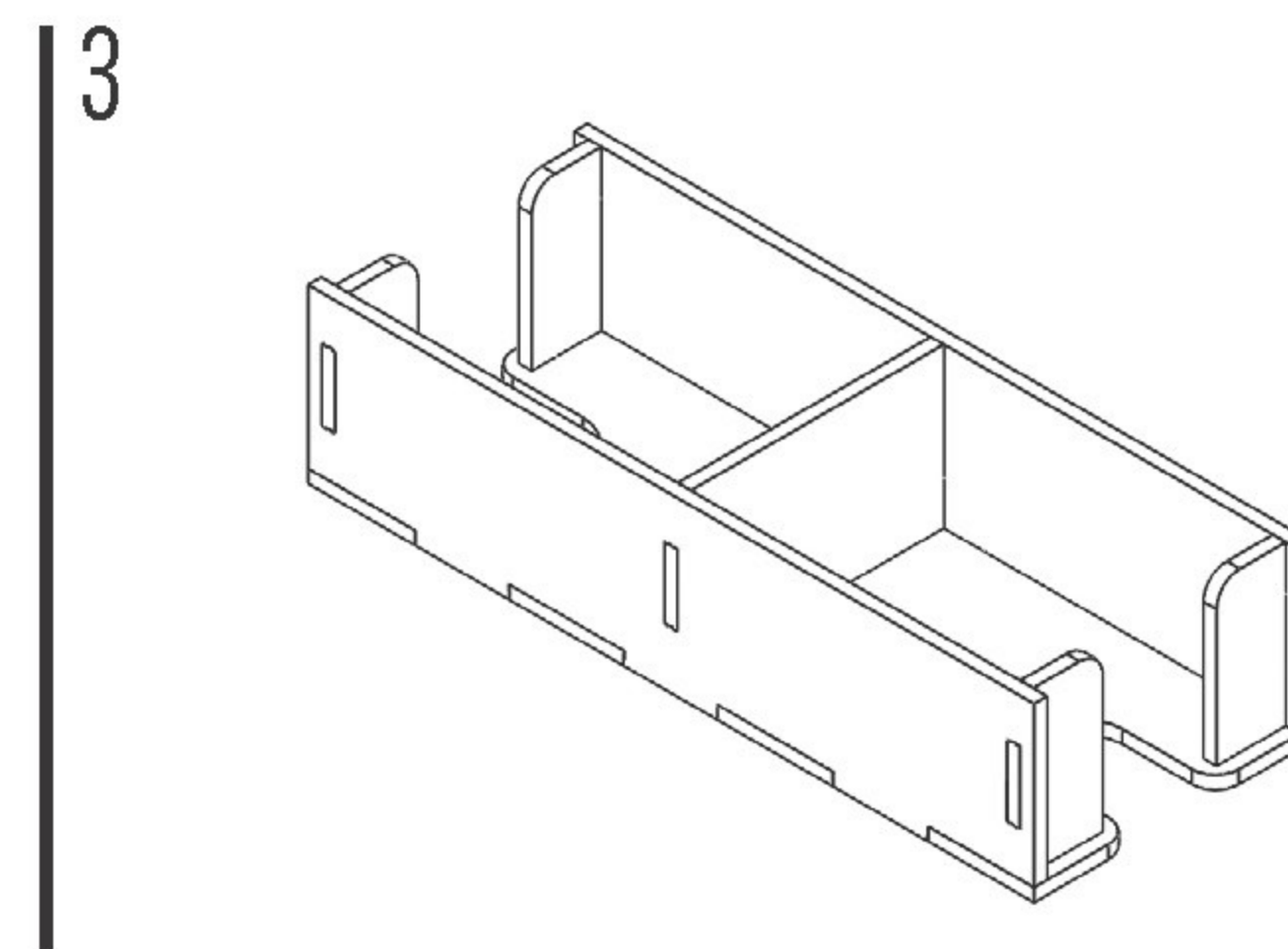
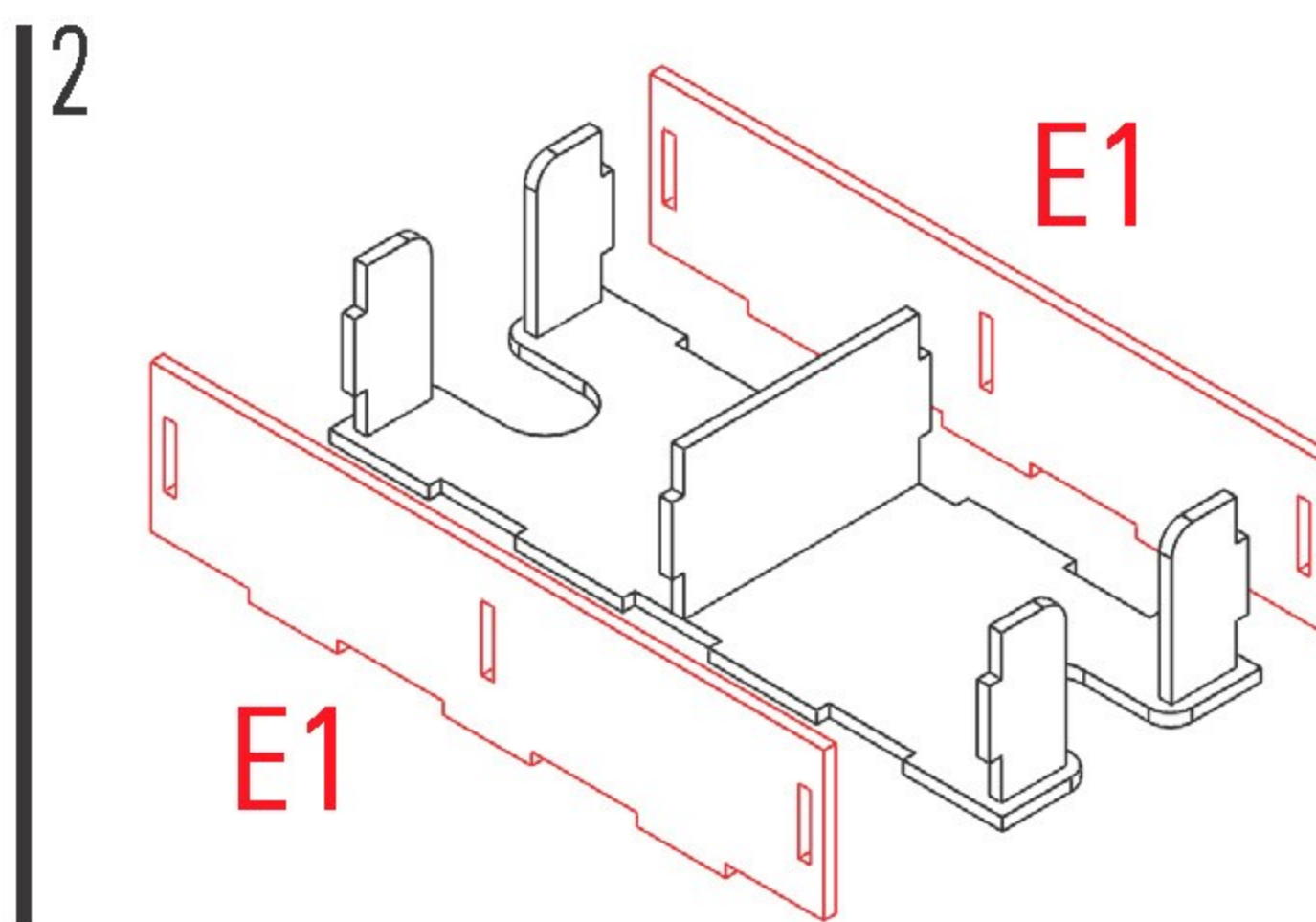
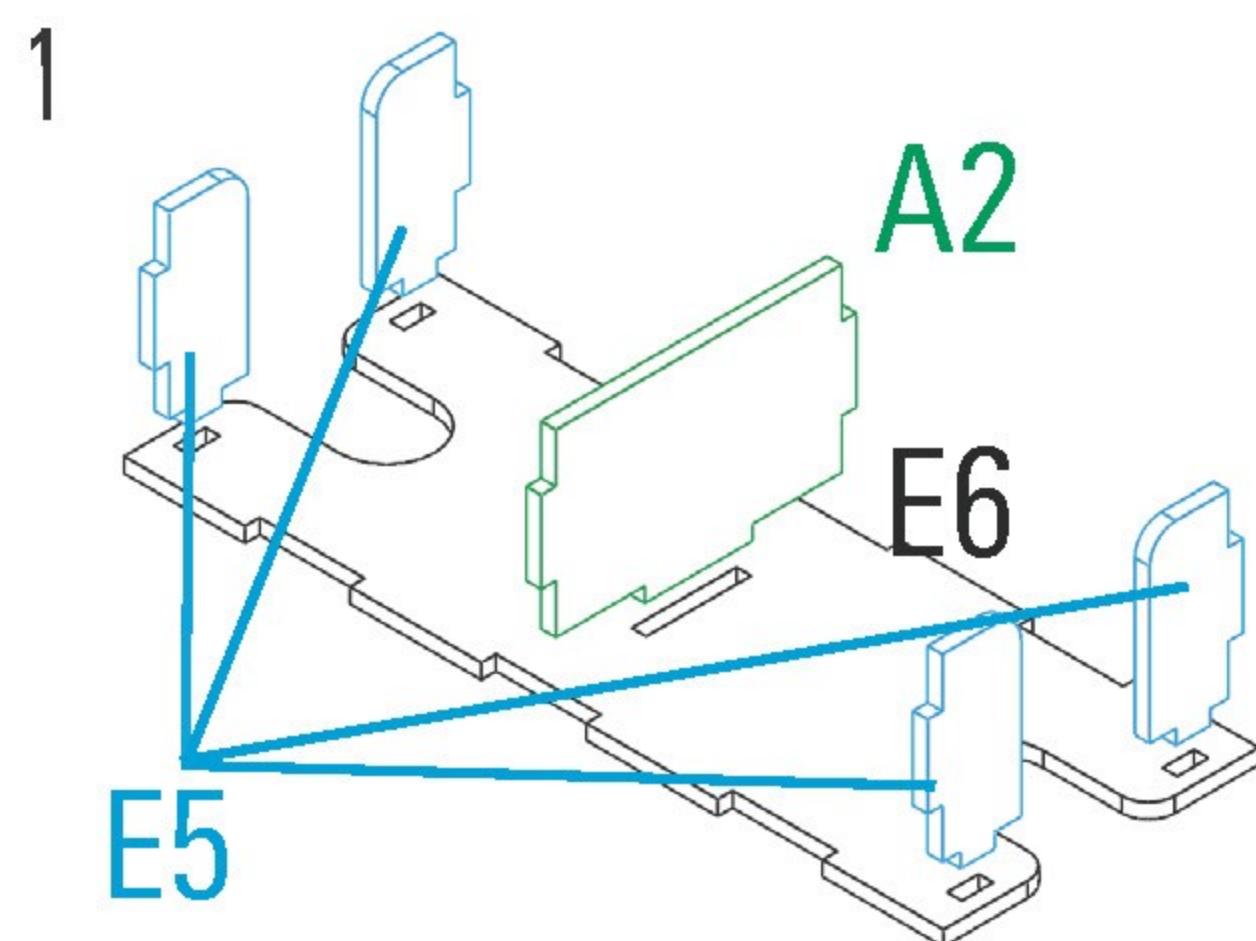
Required parts: **C2,C3,D4,G1,G4,G6,H4,H6,H7**

## Token tray



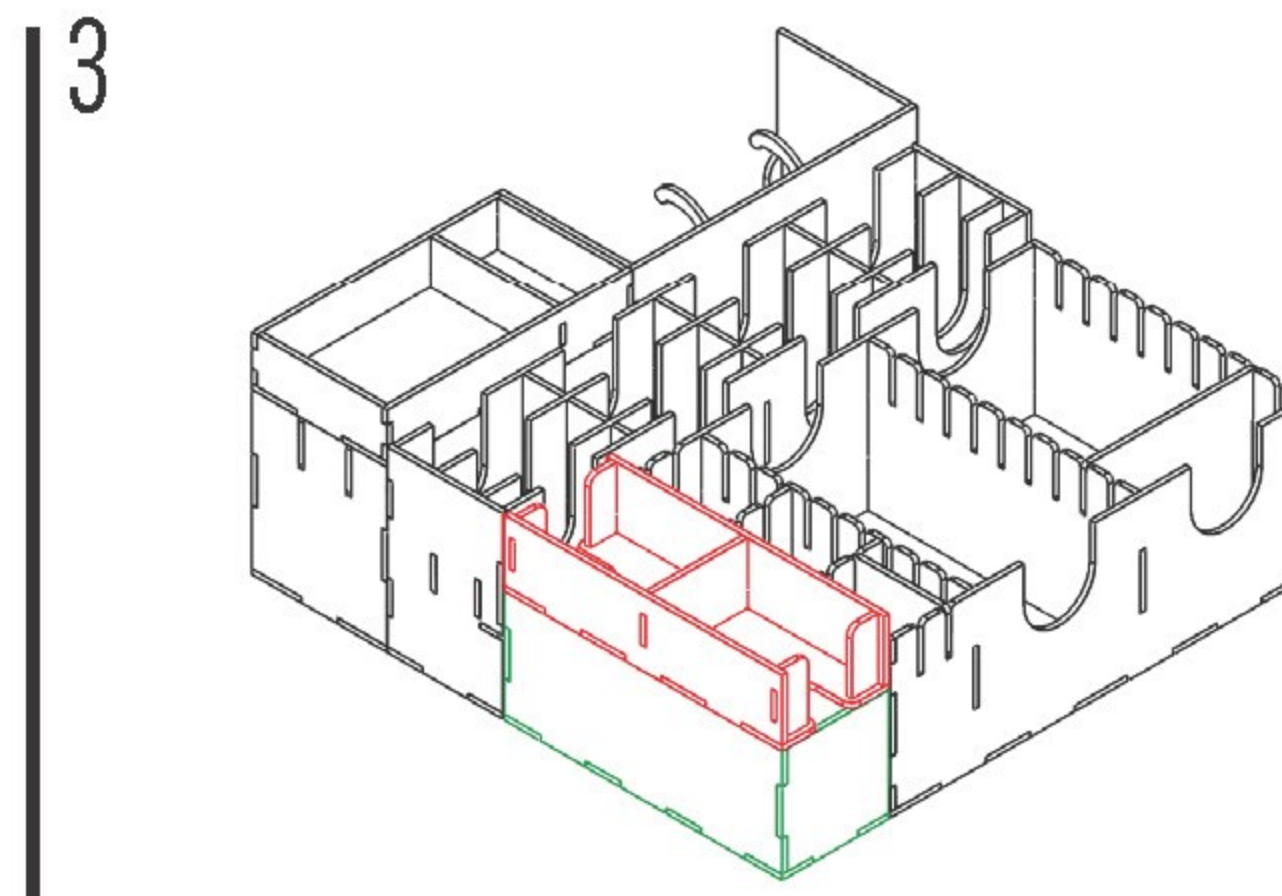
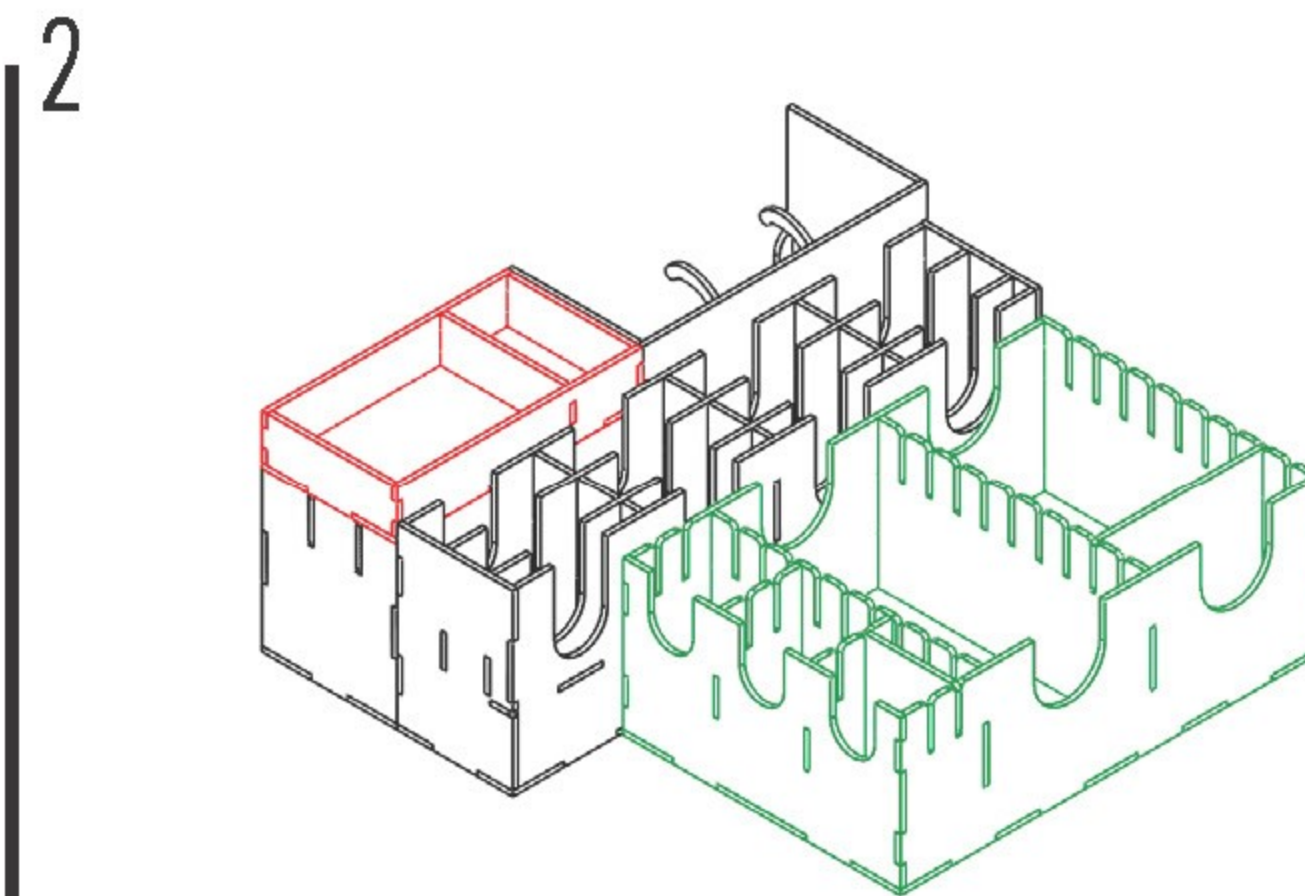
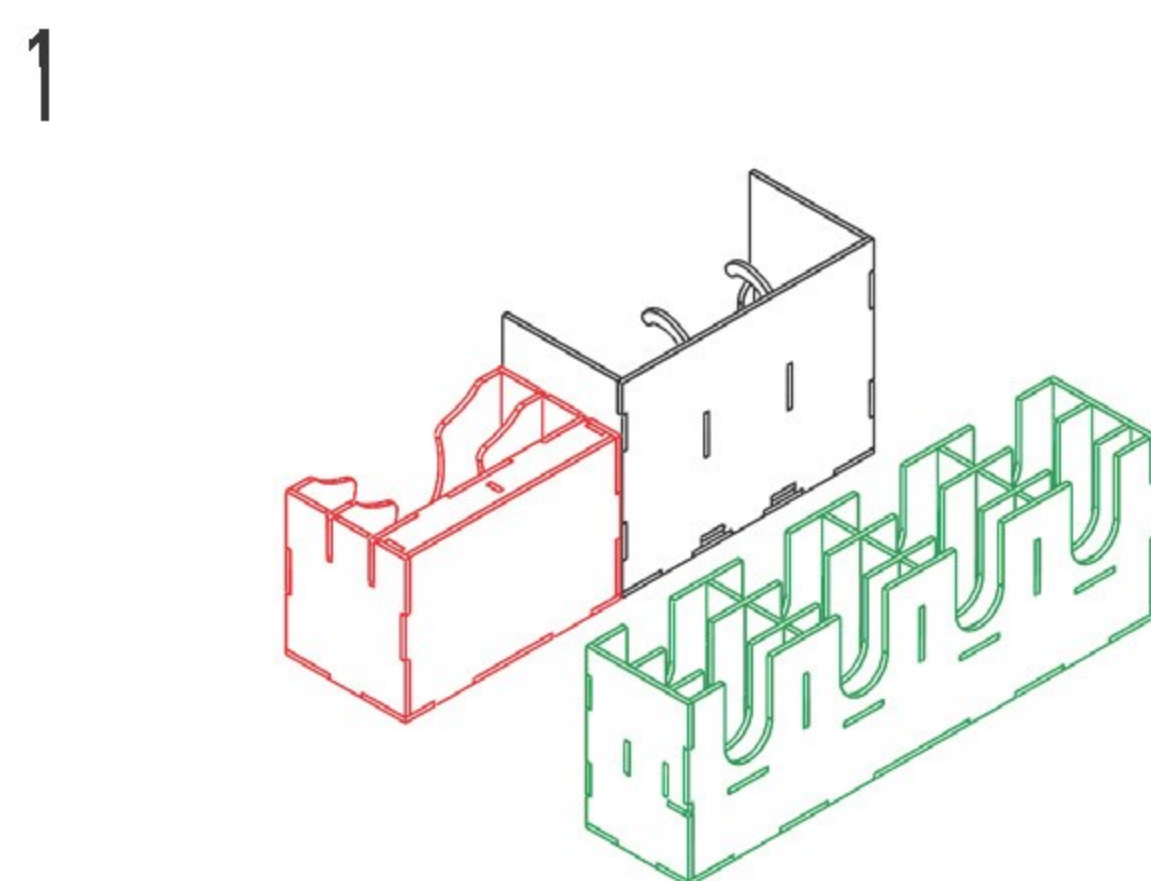
Required parts: **B3x2,G2,G8,H2,H5**

# Small card tray



Required parts: **A2,E1x2,E5x4,E6**

# Assembly



**LASEROX**



Laserox Design Ltd.  
H-2092 Budakeszi  
Tiefenweg way 39

